

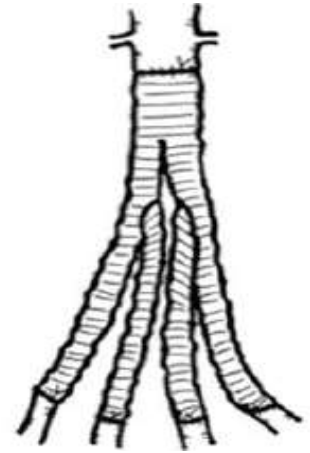
*TCT AP complex 2017
December 01, 2017. 8:10 ~ 8:20 AM*

My Most Complex RCA CTO Case in This Year

Cardiovascular Center, Sakurabashi Watanabe Hospital

Atsunori Okamura

CASE



Patient: Female 70's y.o.

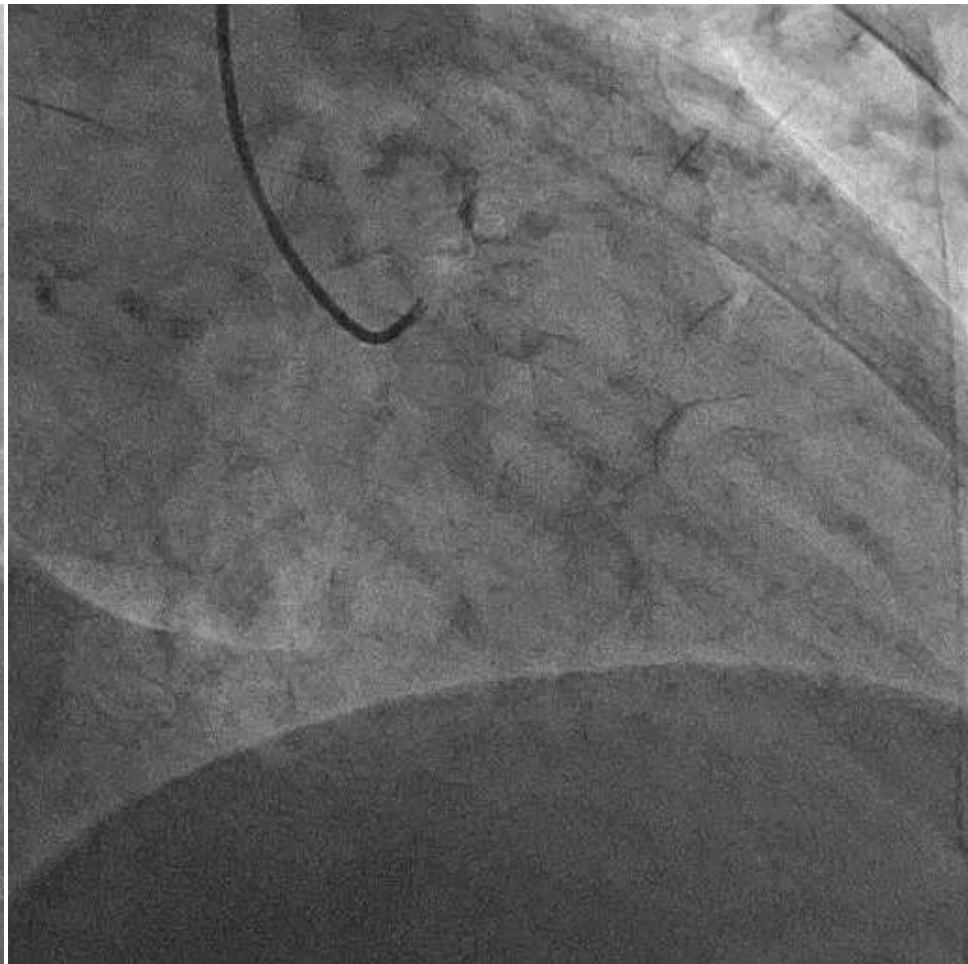
Diagnosis: OMI, EA, AAA (post operation with the graft with 4 branches)

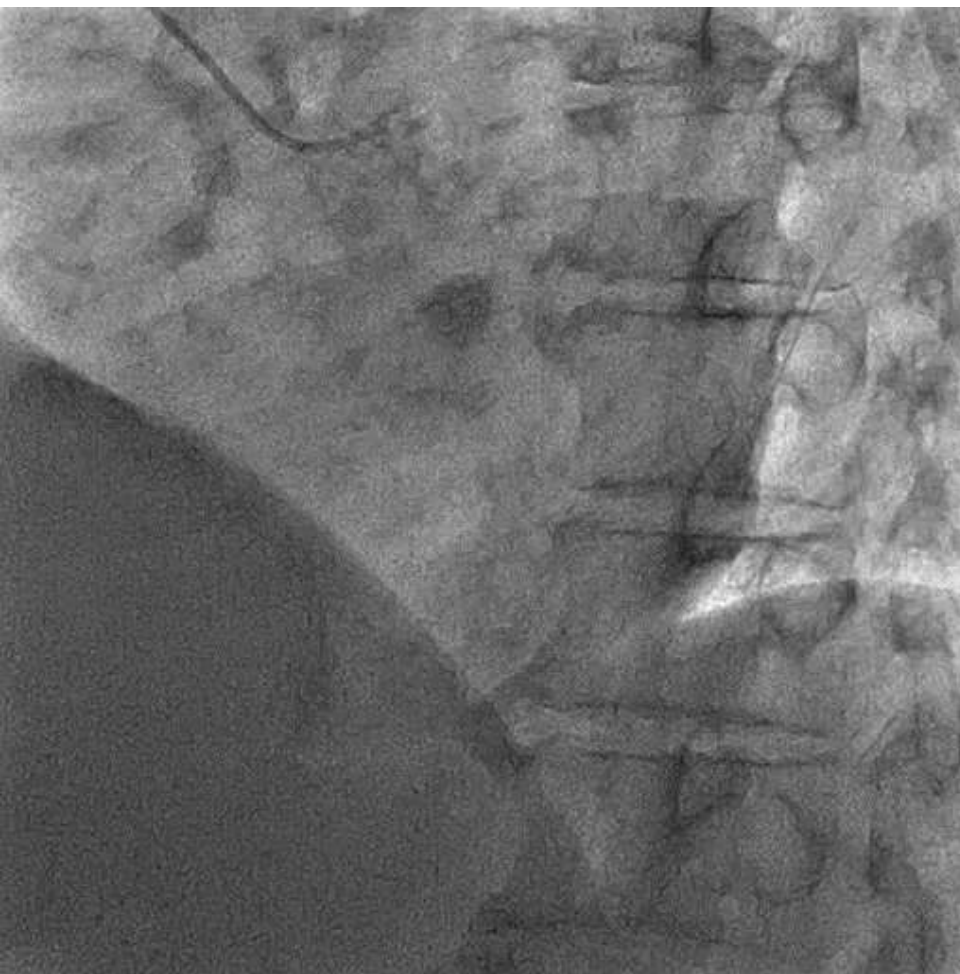
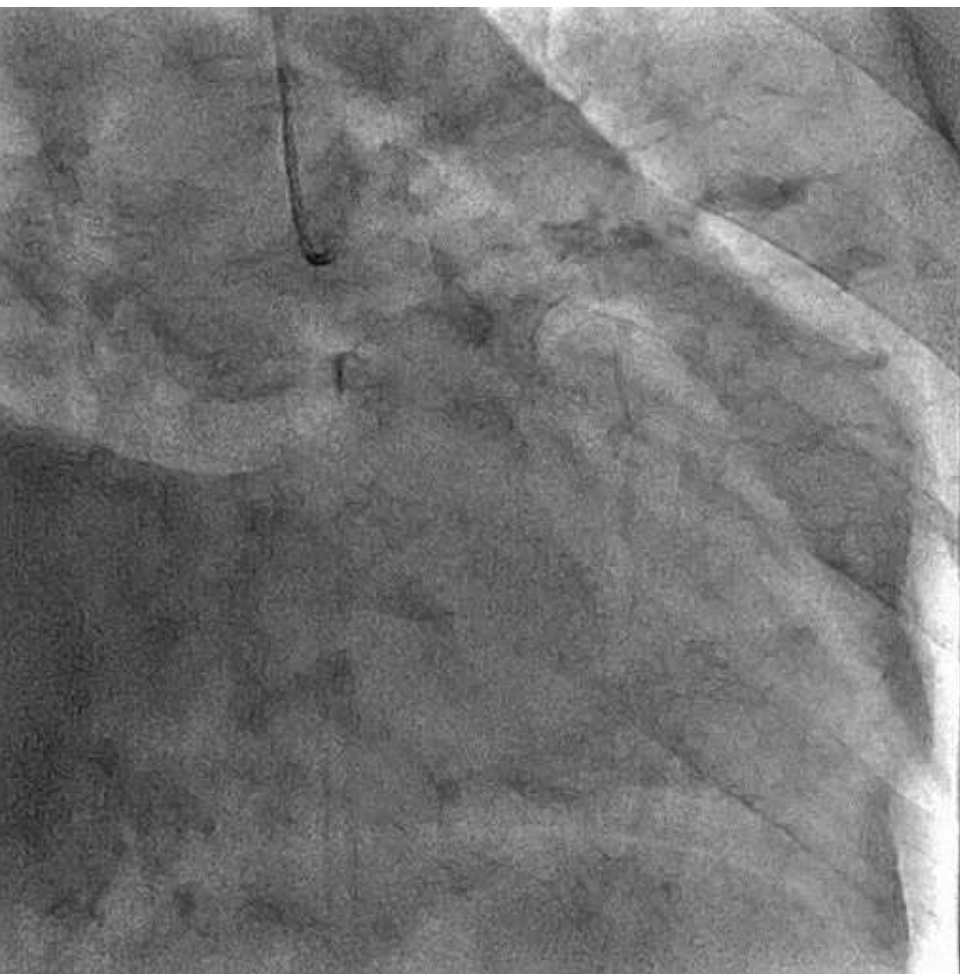
Pre-PCI CAG: RCA proximal 100% which was pointed out pre operation of AAA 6 years ago.

EF: 56%

Target lesion: RCA proximal 100%

Pre-PCI CAG: RCA proximal 100%
In Sep. 2017.



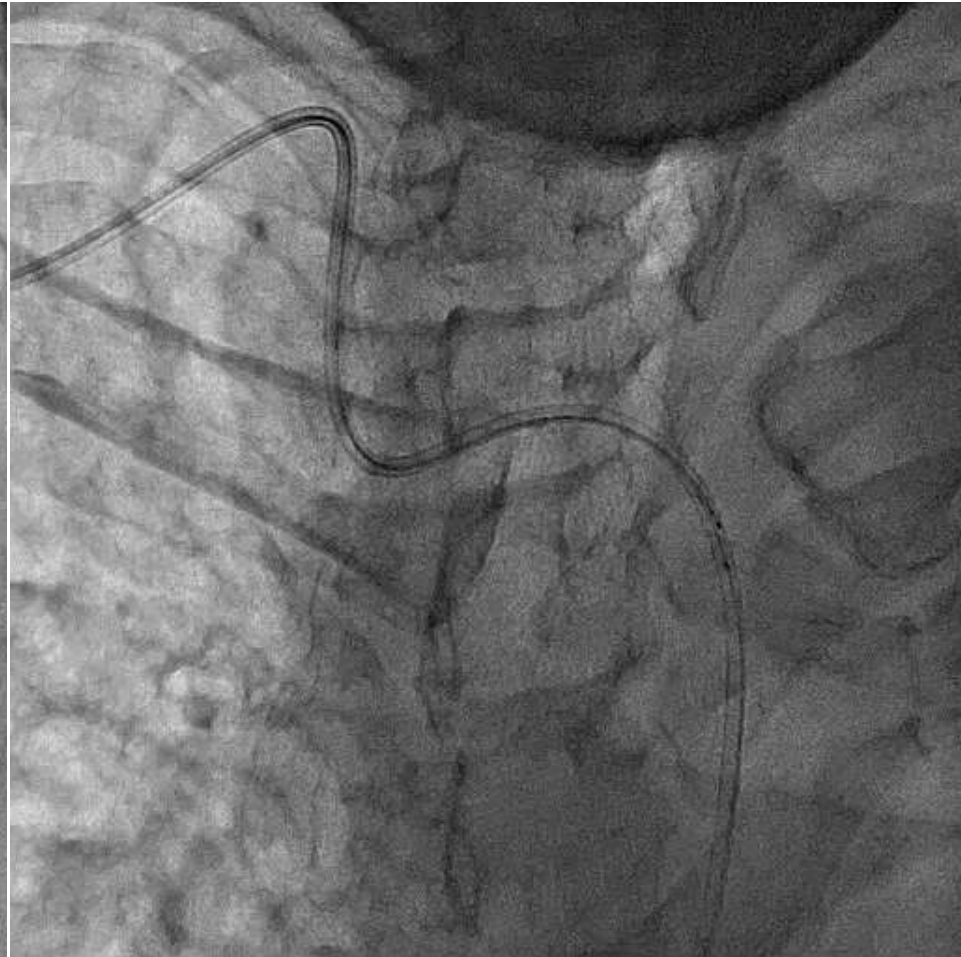


PCI for RCA: RCA proximal 100%

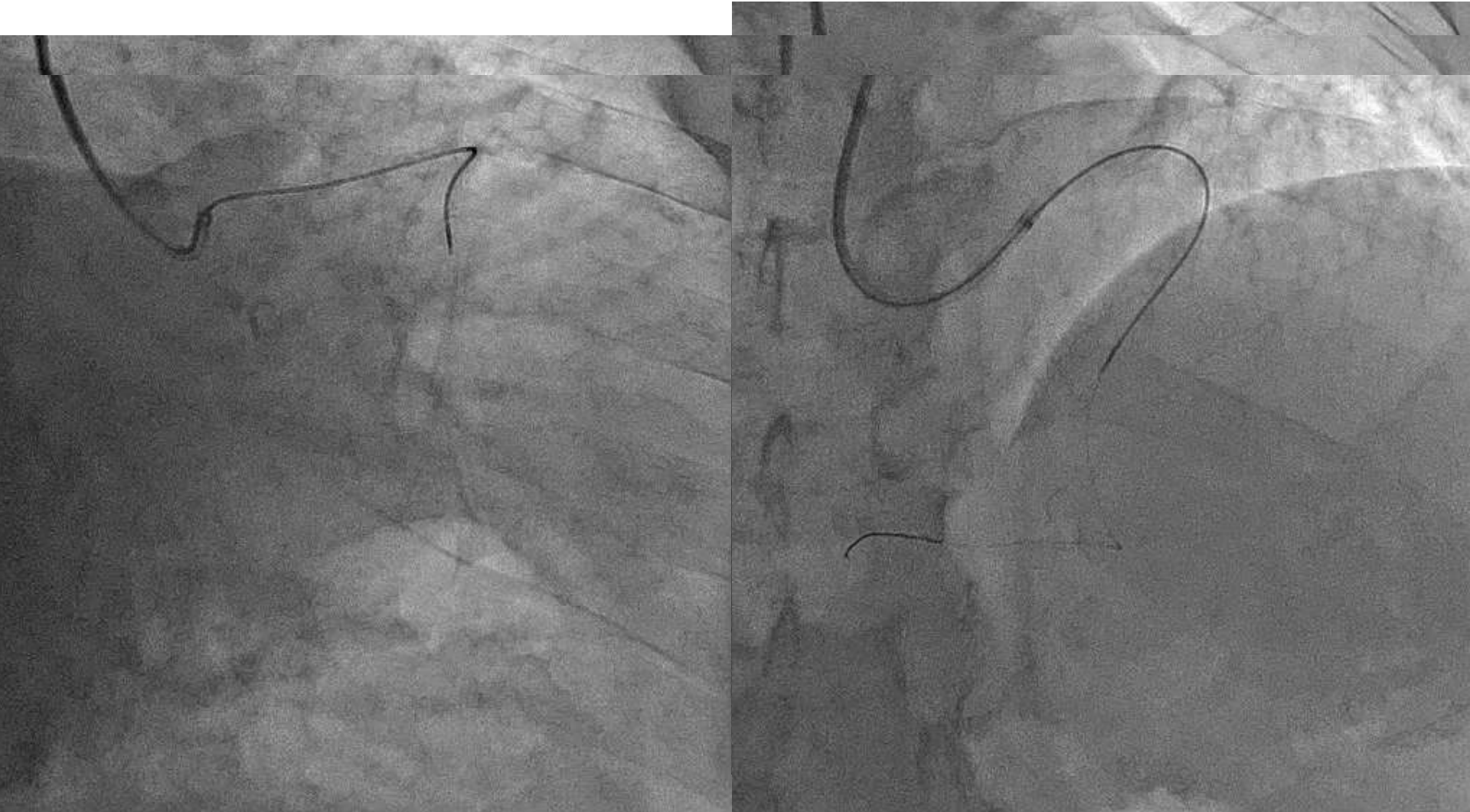
In Oct. 2017.

Because of the 4 vessel-graft and there was the plaque at the aortic arch, bilateral radial approach was recommended.

Retrograde approach Rt. Radial 7F EBU 3.5 SH

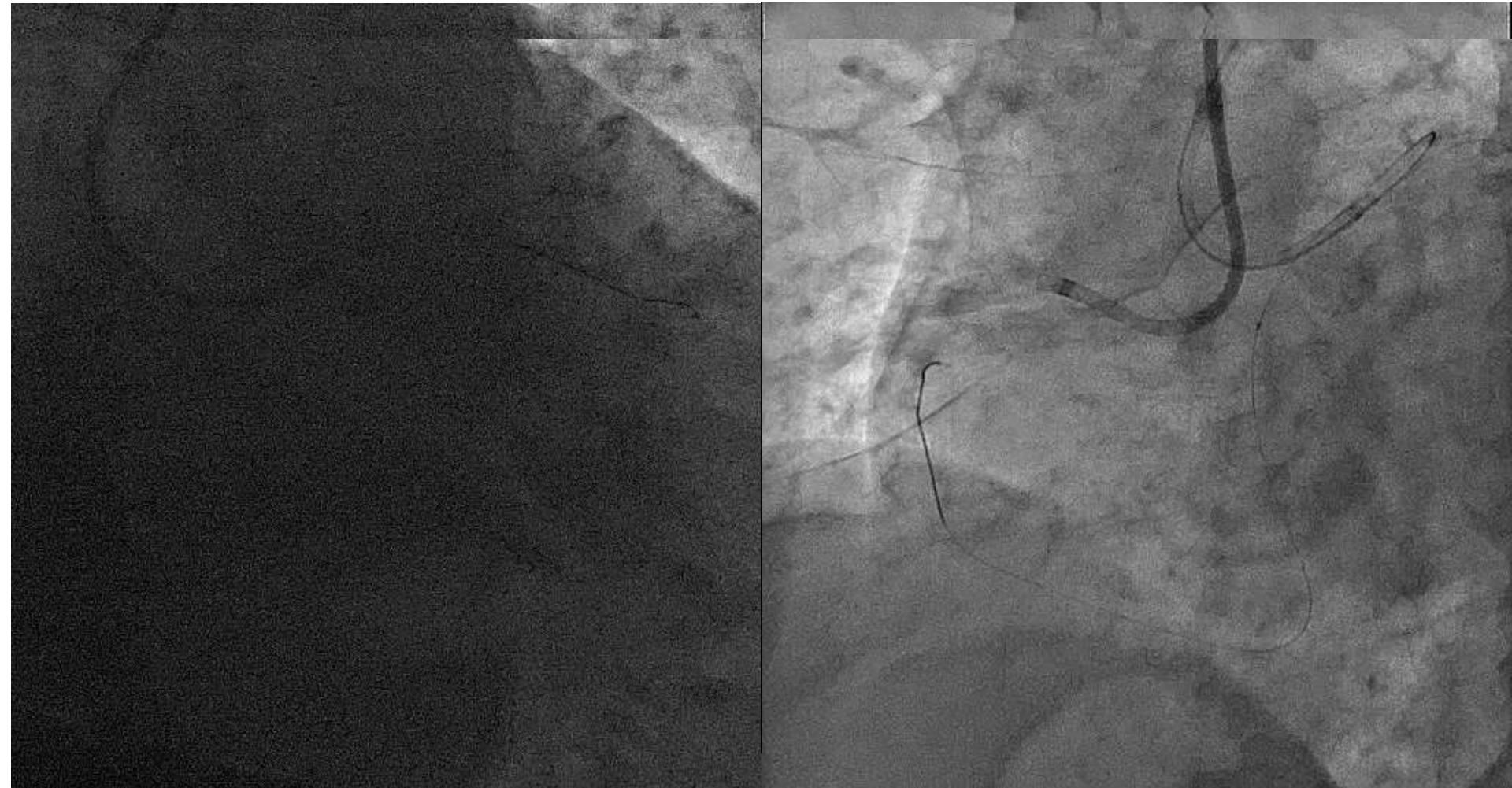


A XT-R could pass through the septal channel by septal surfing.

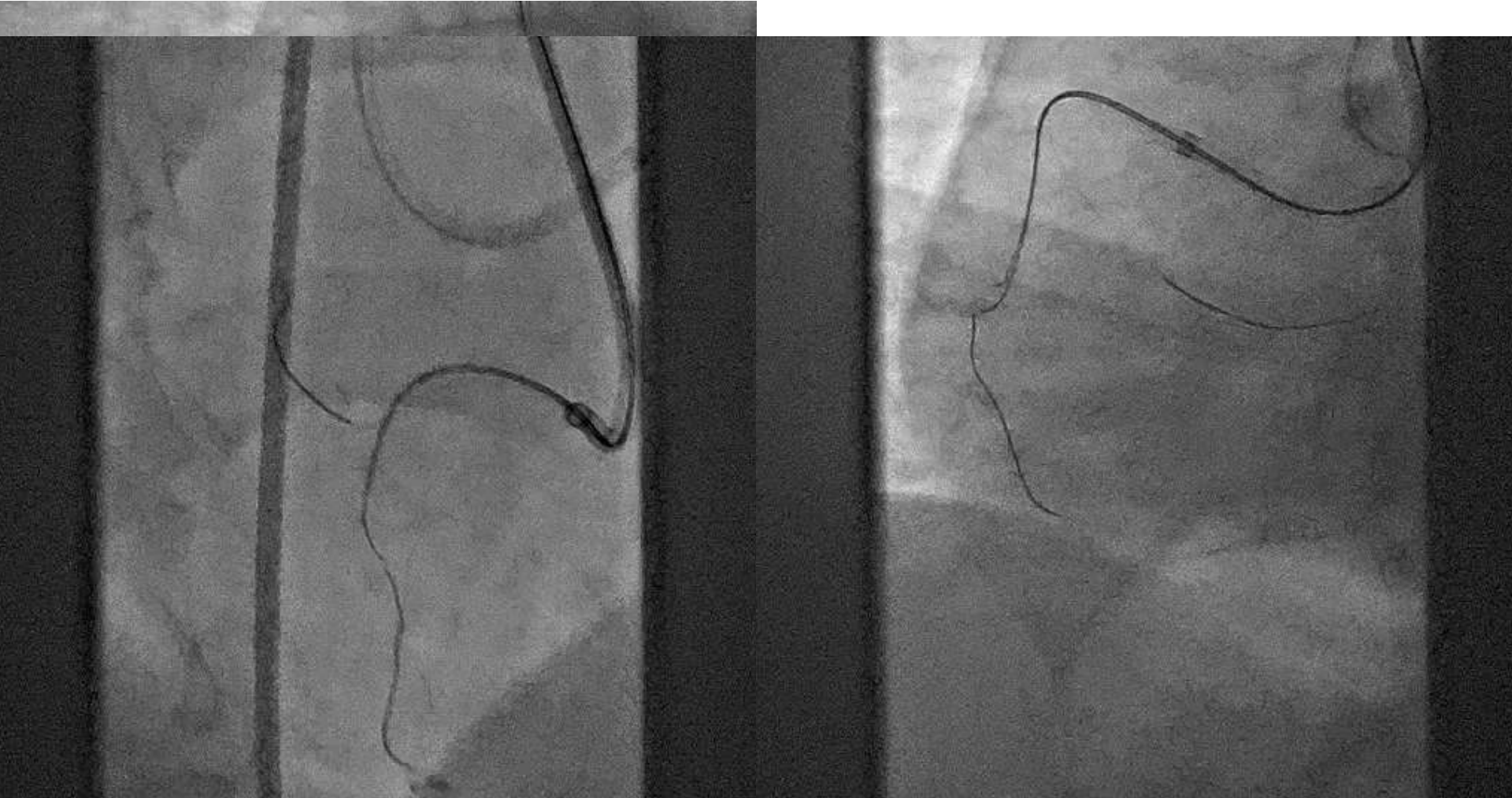


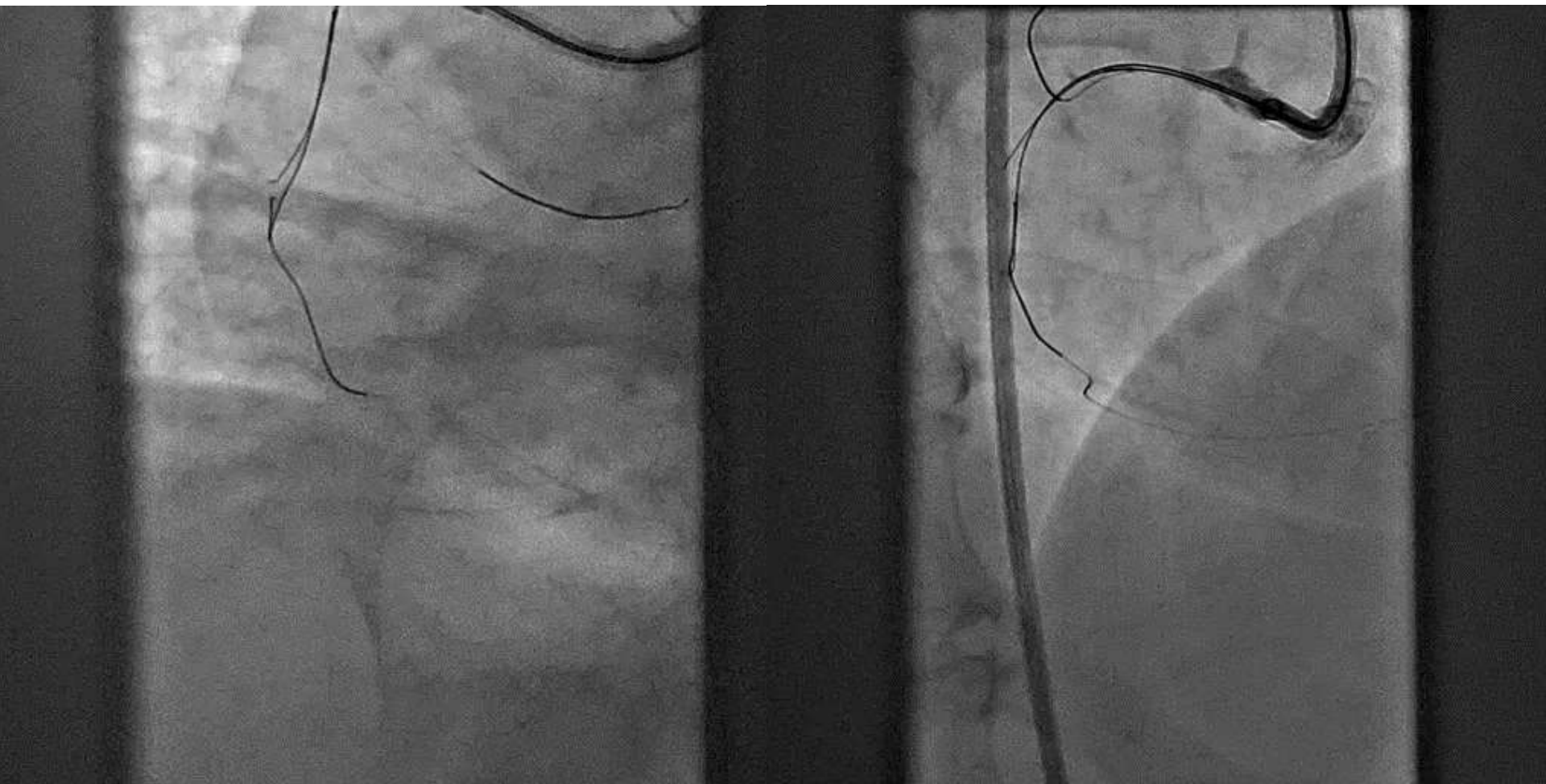
A corsair and a OTW 1.25mm-balloon could not pass through the septal channel even under the anchoring.

An 8 Fr sheath was inserted from the right FA and AL 075 8 Fr guide was engaged into the RCA.



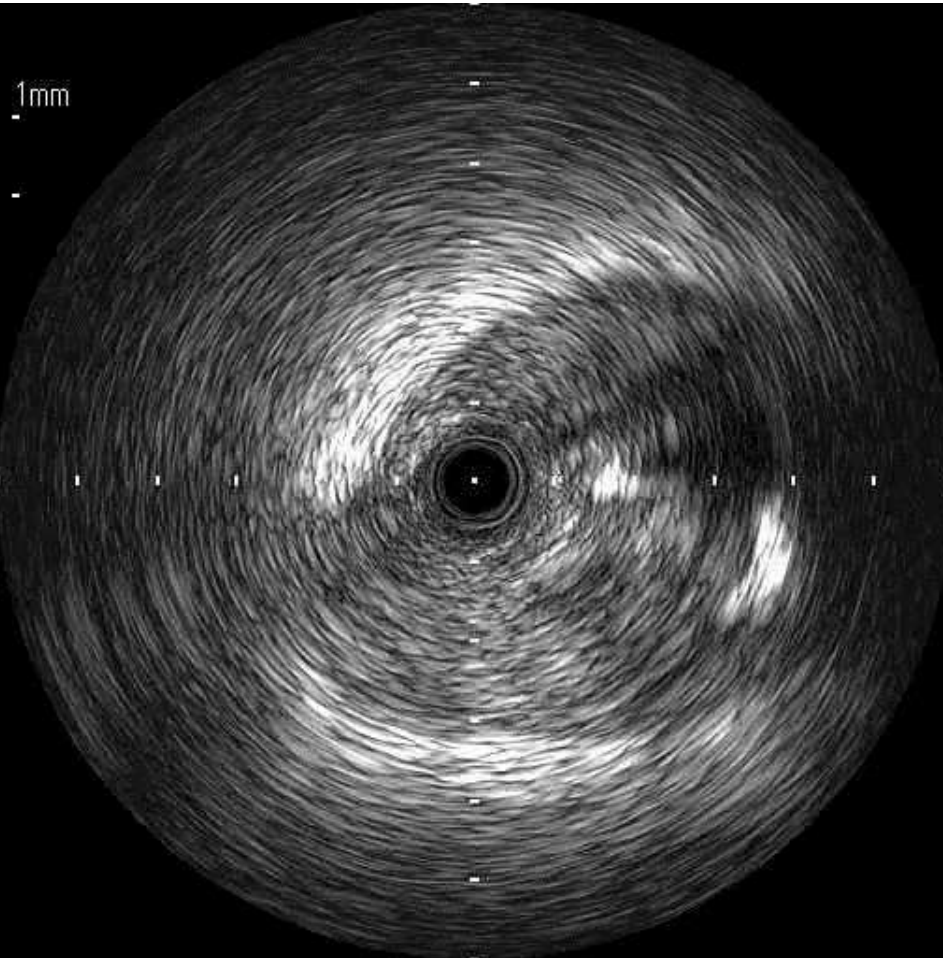
Under the IVUS observation, a XT-R and UB 3 wires were advanced and 3D wiring was performed with a Conquest 12g.



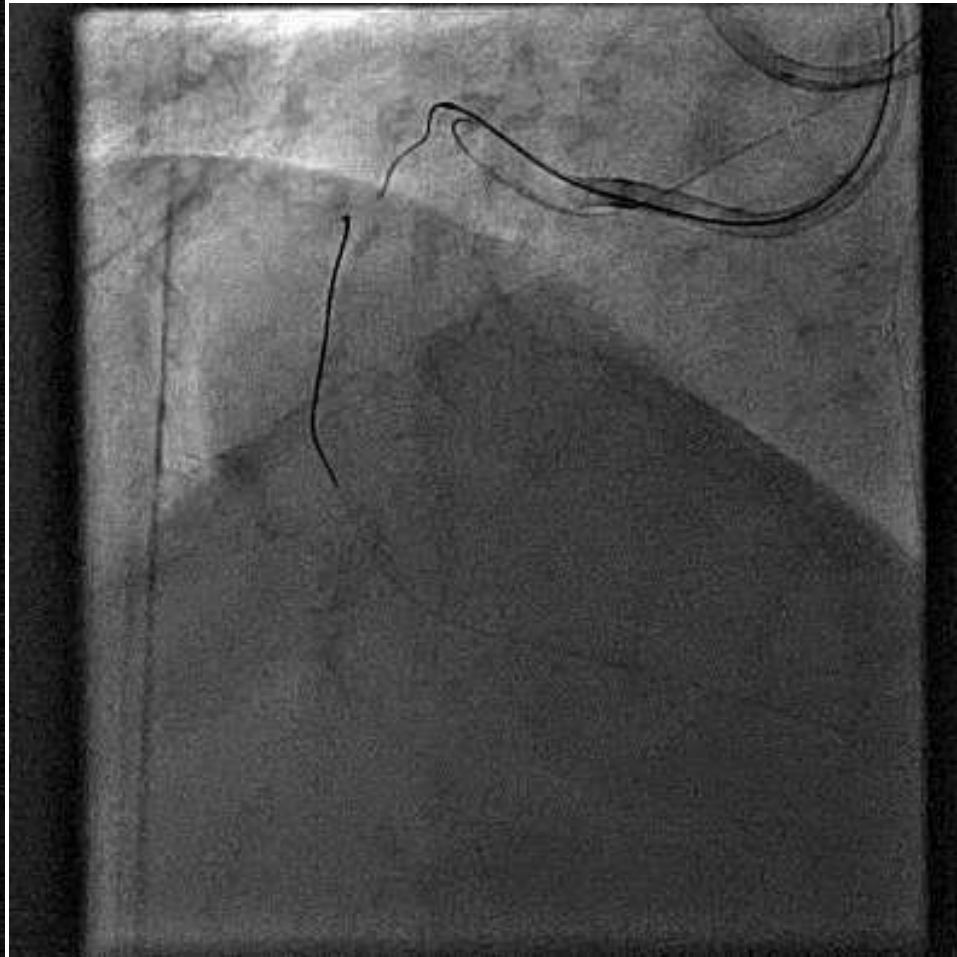
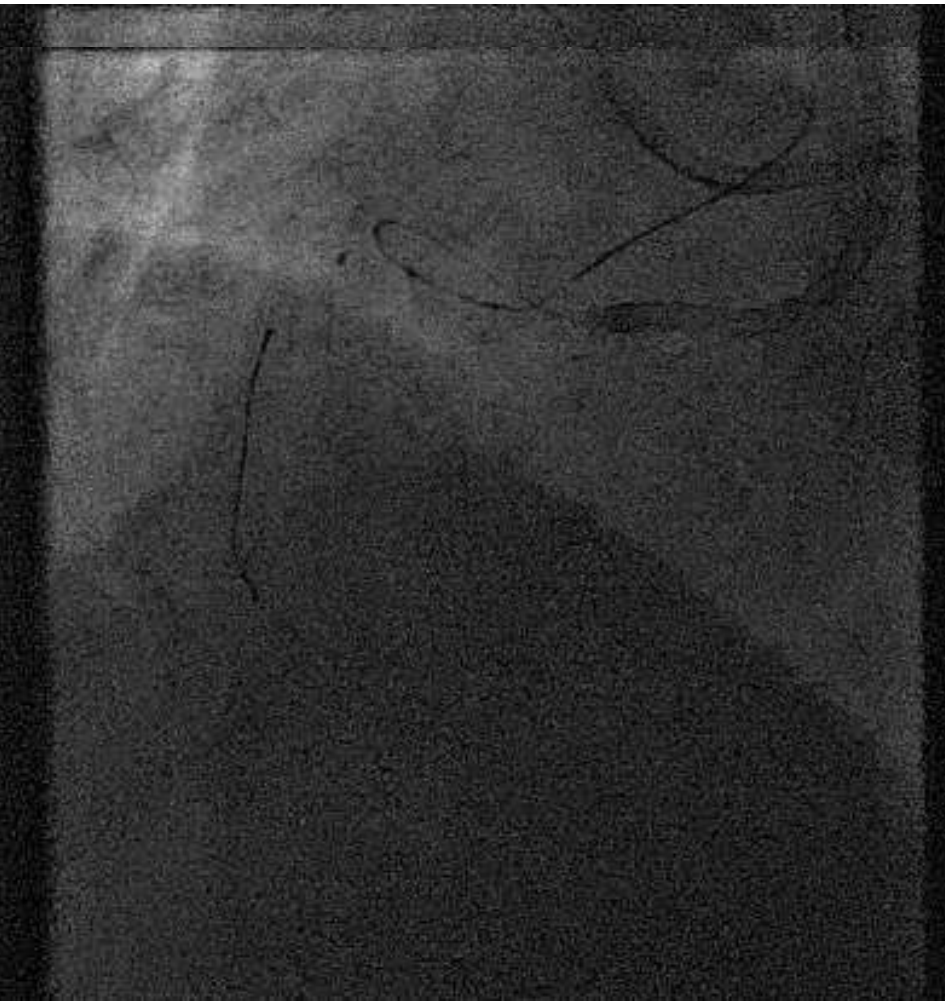


Under the IVUS observation, the 2nd-Conquest 12g was navigated into the true lumen but got into subintimal space again.

The Finecross GT was advanced and UB3 wire was advanced but the Finecross and UB 3 was kicked out the true lumen.



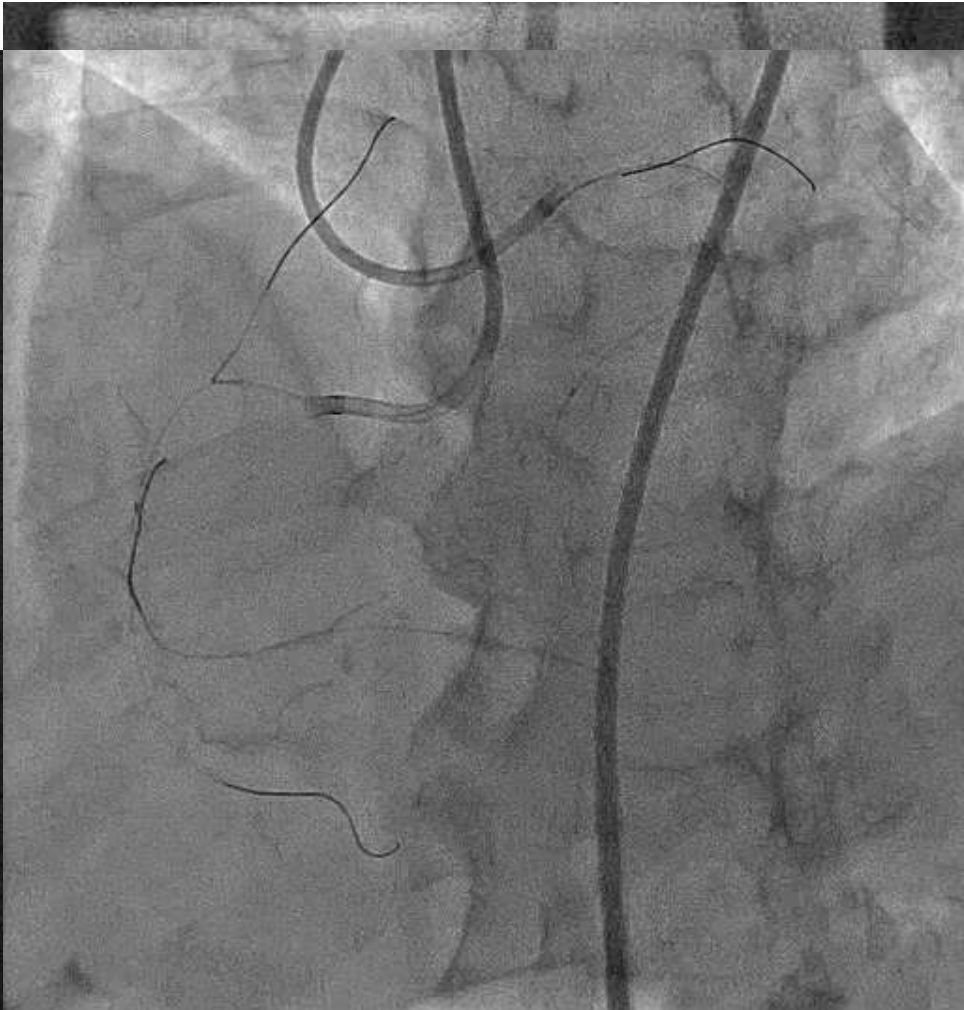
A Finecross GT was advanced and changed the conquest wire to a UB 3 wire but the Finecross GT and the UB 3 was kicked out from the true lumen.



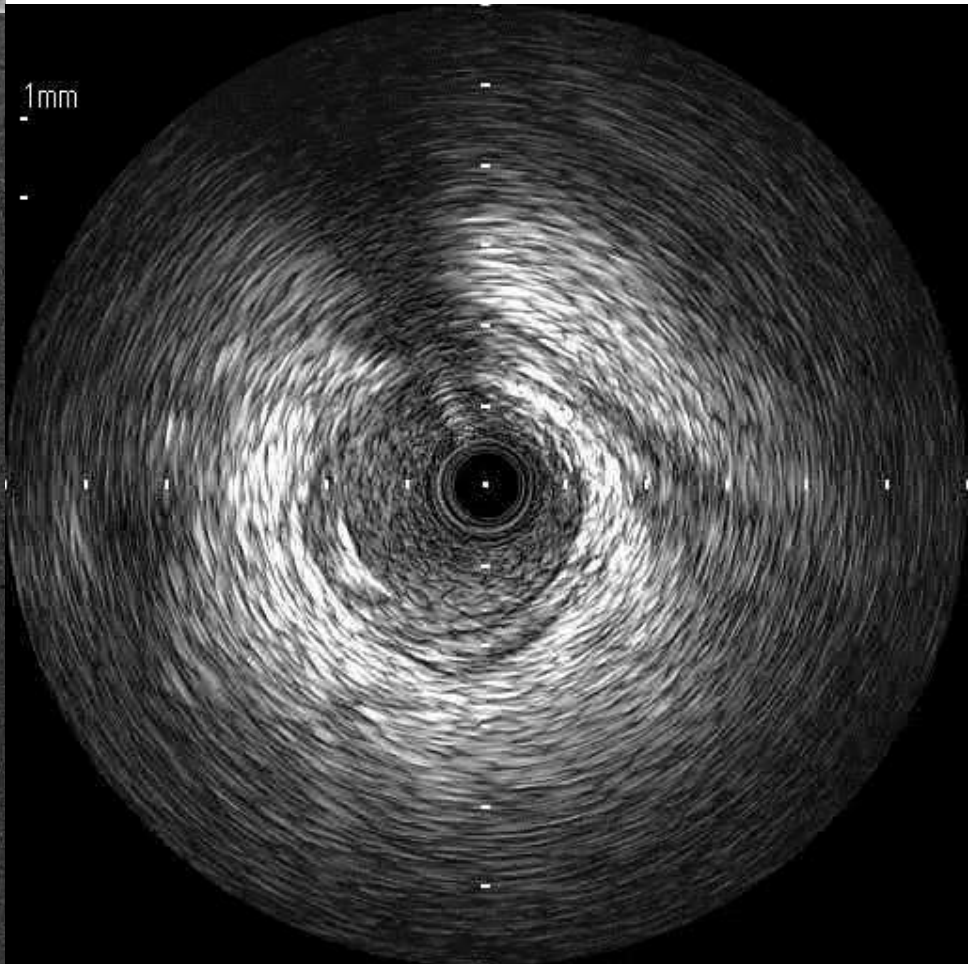
There might be the leak flow from subintimal to true lumen at mid RCA .

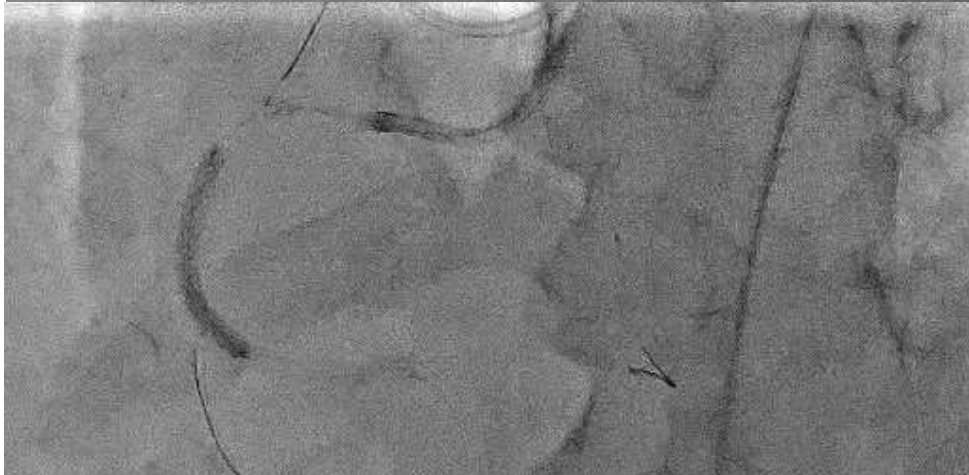
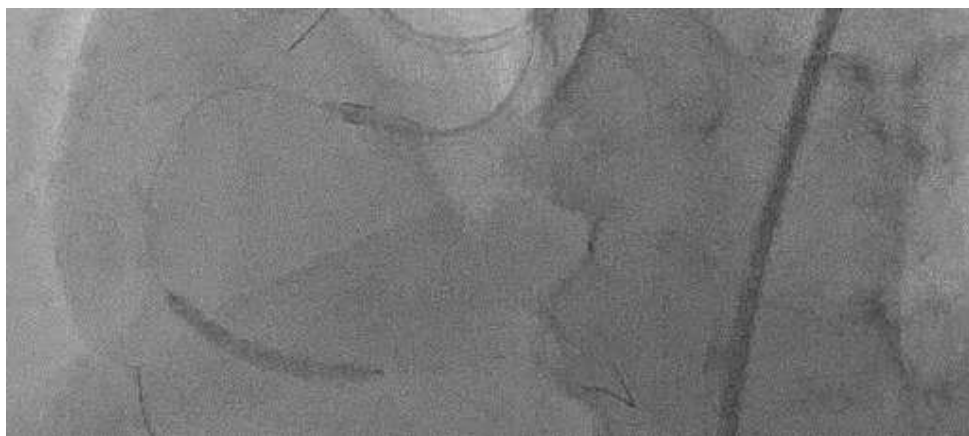


Under the Sasuke, a Fielder FC wire got into the RV branch.



Under the Sasuke, a SION wire got into the true lumen just before the RV branch.





Take home message

The Conquest wires were useful for the penetration strategy with the 3D wiring, but once the Conquest wires pass through the CTO exit, it is difficult to control it.

Even if the proximal part of the Conquest wires is in the subintima, there is the possibility of the successful re-entry. You should check the Conquest route by the polymer-jacket soft wire (XT-R, Fielder FC etc.) before moving the next step.